



# Mustang Tattoo Pro equipment

## Rotary tattoo machine VADER

Congratulations on your purchase of MT Mustang Tattoo equipment!

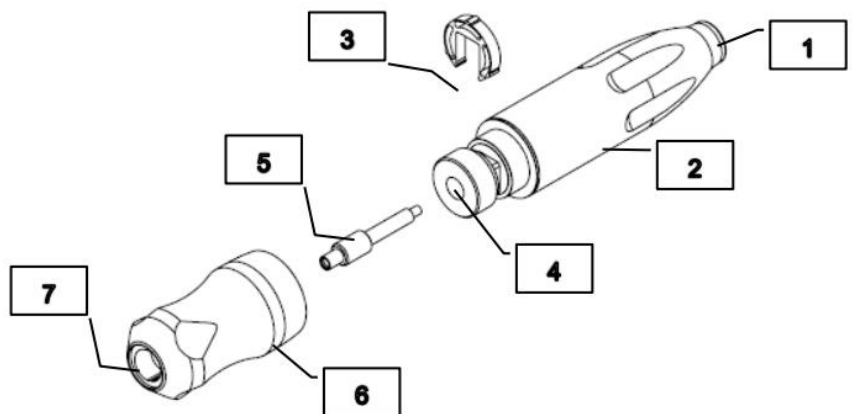
Meet Vader - fast, easy, reliable rotary machine, compatible with a wide range of tattoo cartridges.

Constantly improved development experience and interaction with the masters allows the perfect balance of accuracy, ergonomics and high quality. The machine is completely ready to work! Read the instructions for properly using the machine.

**The package** includes a machine, 2 pushers (hard and soft), a spring stopper, warranty card, instructions, a store box.

**Purpose:** universal tattoo machine Vader is designed to apply a contour, paint, shadow.

- 1 - RCA Connector
- 2 - Drive unit housing
- 3 - Spring Stopper
- 4 - Drive unit hole
- 5 - Pusher
- 6 - Cartridge Holder
- 7 - Cartridge slot



### Performance:

- power 6 watts
- RCA power plug
- Optimal supply voltage 6-9 V
- Maximum operating voltage 9 V
- Maximum needle stroke (throw): 3.5 mm
- Weight 140gr

**Stable input power** is responsible for the safety and quality of the result. We recommend using wires with a cross section of at least 0.75 mm, power supply units with an output current of at least 3A.

### Important security measures

✓ The machine is intended only for professional use by tattoo masters. The manufacturer is not responsible for the misuse of equipment and its parts! And also for non-compliance with the norms of sterilization and disinfection.

- ✓ It is necessary to use disposable cartridges. Before and after use, wipe the machine with a disinfectant composition.
- ✓ Be sure to use barrier protection for the typewriter, power supply and clip-cord.
- ✓ During the session, always wear disposable gloves.

### **Preparation for work**

Before starting operation, you must choose a pusher (5) (hard or soft), depending on the type of work being performed, insert it into the hole of the drive unit (4) with a thickening outward, press it with a finger until a tight fit, then turn the cartridge holder and install the cartridge. Needle reach is adjusted by turning the holder counterclockwise - increasing the needle reach, clockwise - reducing the needle departure.

### **Machine care**

- ✓ Disinfection of the holder should be carried out in disposable gloves. Disconnect the machine from the power supply before changing the cartridge.
- ✓ Troubleshooting and parts replacement is recommended to do in the service center. More information about the service and maintenance can be found at <https://mustang-tattoo.ru/>. During the warranty time, repair is free.
- ✓ Machine cannot be sterilized in an autoclave or a dry-heat oven!

### **Manufacturer's warranty**

The warranty of the corpus (housing) is 5 years, of the working parts of the machine (engine, internal mechanism, pusher, stopper-spring) is 1 year. Attention! The official guarantee becomes active after registration on the site <https://mustangtattoo.ru/guarantee/>. You must register within 30 days of purchase. This warranty covers factory failures, but does not apply to wear and tear on equipment and parts as a result of proper or improper use.

### **Warranty covers:**

- ✓ RCA socket out of order;
- ✓ stripping of a screw or thread in the fastening elements of housings, motors and internal mechanisms of rotary machine.

### **The warranty does not apply to equipment:**

- ✓ suffered from aggressive non-alcoholic antiseptics;
- ✓ with signs of falling, strikes on the body and components;
- ✓ with traces of corrosion and processing;
- ✓ with signs of self-reconfiguration, modernization;
- ✓ if foreign bodies, liquids, dirt get into the mechanism.

### **And also the warranty is terminated in the event of:**

- ✓ misuse of equipment;
- ✓ exceeding the maximum operating voltage;
- ✓ sterilization in an autoclave or dry heat oven.

**Contact service center:**

Moscow, st. Narodnaya, 14, p. 1, tel. +7 (499) 754-85-25

[info@mustang-tattoo.ru](mailto:info@mustang-tattoo.ru)

<https://mustang-tattoo.com>